



TERAFLOAT®

POWER DENTISTRY

2020

Terafloat ®
Designed and manufactured by
Swissvet Veterinary Products



© SWISSVET 2020

2218 N Central St
Knoxville, TN 37917
USA

WWW.TERAFLOAT.COM
+1 865 540 8830

6/20 - US-EN-A4

LIGHTWEIGHT PERFECTION

The concept of the Terafloat is simple: a lightweight instrument with lithium power and a range of interchangeable shafts with unique features. The combination of modern materials, a clever design and Swiss quality makes the Terafloat the perfect instrument for state-of-the-art equine dentistry treatment in the 21st century. Since its introduction in 2015, the Terafloat is sold since 2015 and has been a tremendous success among equine veterinarians and it is equally liked by horse owner and trainers.



ONE NAME - THREE LINES: ECO, LED AND FLX

Terafloat offers three lines of power instruments: The ECO line, the LED line and the FLX line. Each line has a wide range of instrument sets from basic to professional, to satisfy every budget and every treatment approach. Together they meet the demands from the general large animal practitioner to the equine dentistry specialist.

Assembly and service is performed in several locations around the world. The Terafloat is distributed in over 20 countries. Swiss quality and a one year warranty are standard.

FOR VETS FROM A VET

The Terafloat was developed by the board certified Swiss veterinarian Dr. Ruedi Steiger, DACVIM. He moved to the US for a residency program in equine medicine but found his true passion in equine dentistry. Dr. Steiger owns Swissvet and he is still practicing and teaching equine dentistry.

Dr. Steiger combined 20+ years of dentistry experience with Swiss engineering to design his version of a perfect equine Powerfloat. The high precision parts for the Terafloat are machined in Switzerland exclusively for Swissvet.



HOW TO CHOOSE A TERAFLOAT

1. Select a model line: ECO, LED or FLX
2. Pick the routine shafts: Disc shaft and/or Apple core shaft
3. Consider elite shafts: Pony and/or Incisor shaft
4. Find the set that meets your selection



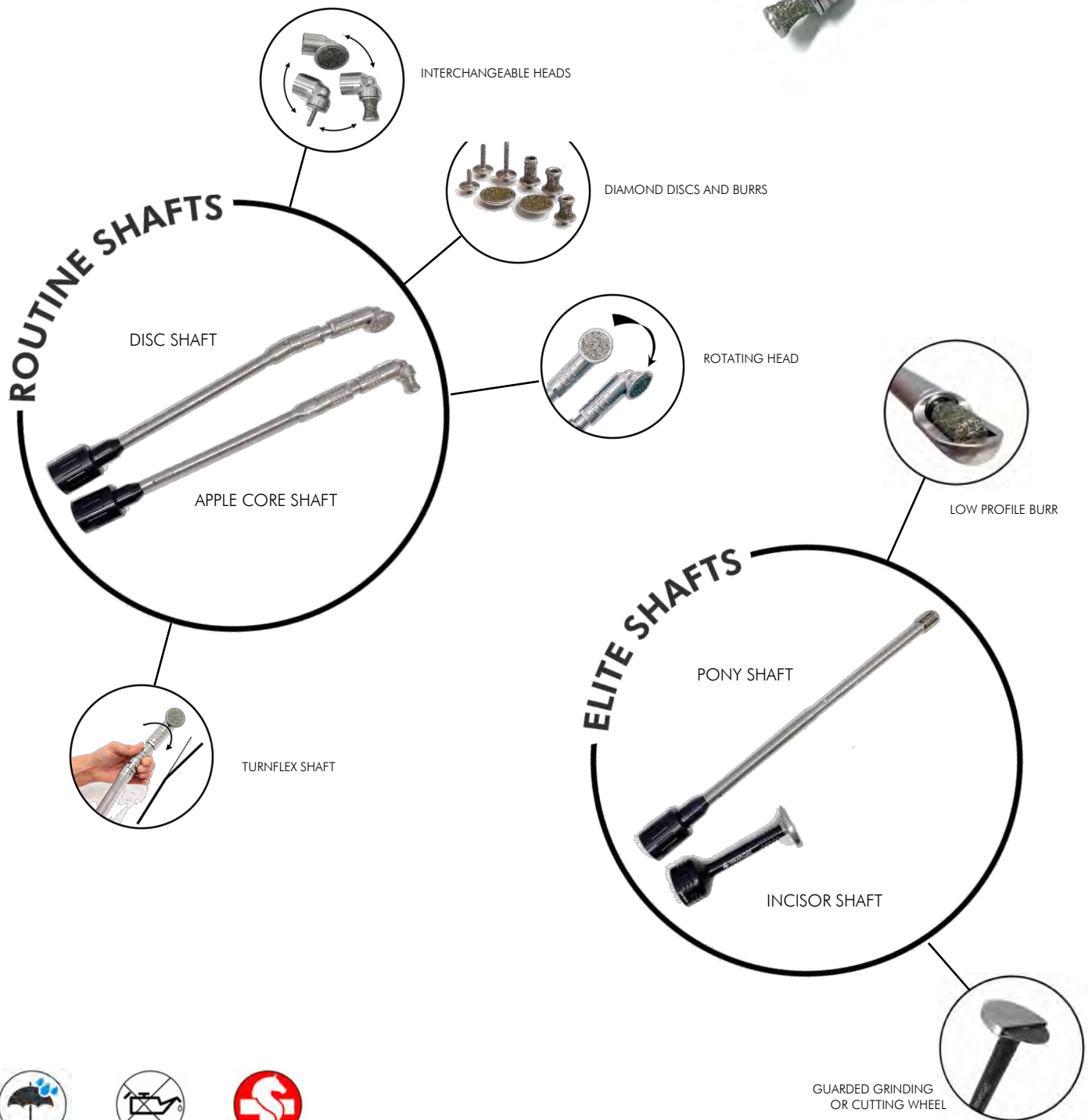
TERAFLOAT® ECO

STURDY AND AFFORDABLE

The Terafloat ECO line features:

- Variable speed
- Trigger locking switch
- Electronic shut-off protection
- Lithium batteries 3Ah
- Battery charge indicator lights
- Removable shafts
- Routine and elite shafts

TERAFLOAT ECO STANDARD SET
WITH ROUTINE SHAFTS
(DISC AND APPLE CORE)



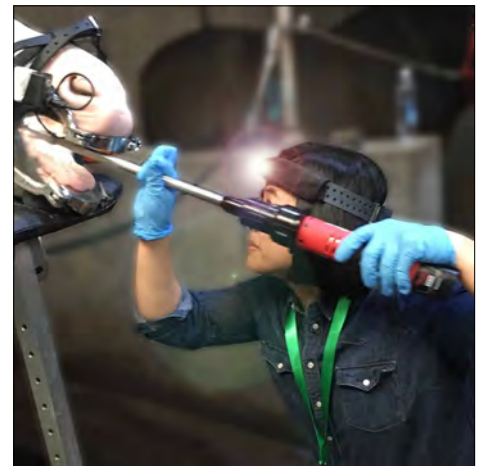
The Terafloat ECO line is amazing for everyday dentistry. It offers all Terafloat features but without the LED illumination. It is a sturdy and versatile solution for a great price.

The two routine shafts have the Turnflex mechanism to quickly switch from a straight or curved position allowing the perfect positioning of the grinding head. The apple core shaft and the disc shaft are identical, but each use a different grinding head. The diamond coated Terafloat burs and discs are Swiss made and they are interchangeable. The routine shafts are efficient and produce precise dental work.

The two elite shafts, the pony shaft and the incisor shaft, use the same motor and they are easily interchanged. The pony shaft has a low profile guarded burr that reaches tight spaces and the incisor shaft has a large cutting or grinding wheel which allows for efficient and precise incisor work.

The ECO line is great for the general practitioner that wants a modern instrument with smart features that allows for detailed equine dentistry procedures at an affordable price. When upgrading to an advanced or professional set, all corners of dentistry are covered with the ECO line.

Several Terafloat Eco sets are available. The components are modular and interchangeable, making it easy to upgrade from one set to the next.



T-0036G: TERAFLOAT ECO BASIC SET

(1) Motor ECO, (2) Batteries 3.0Ah, (1) Charger, (1) Routine ECO shaft with guarded rotary disc T3-C10, (1) Tool Bag, (1) Long case. Also available with Head with non-guarded rotary disc T2-C10 (T-0036).



T-0039G: TERAFLOAT ECO BASIC PLUS SET

(1) Motor ECO, (2) Batteries 3.0Ah, (1) Charger, (1) Routine ECO shaft with guarded rotary disc T3-C10, (1) Head with non-guarded Apple Core Burr A2-M8, (1) Tool Bag, (1) Long case. Also available with Head with non-guarded rotary disc T2-C10 (T-0039).



T-0042G: TERAFLOAT ECO STANDARD SET

(2) Motors ECO, (3) Batteries 3.0Ah, (1) Charger, (1) Routine ECO shaft with guarded rotary disc T3-C10, (1) Routine ECO shaft with non-guarded Apple Core Burr A2-M8, (1) Tool Bag, (1) Long case. Also available with a head with non-guarded rotary disc T2-C10 (T-0042).



T-0060G: TERAFLOAT ECO ADVANCED SET (INCISOR)

(2) Motors ECO, (3) Batteries 3.0Ah, (1) Charger, (1) Routine ECO shaft with guarded rotary disc T3-C10, (1) Routine ECO shaft with non-guarded Apple Core Burr A2-M8, (1) Incisor shaft, (1) Tool Bag, (1) Long case. Also available with a head with non-guarded rotary disc T2-C10 (T-0060).



T-0001G: TERAFLOAT ECO ADVANCED SET (PONY)

(2) Motors ECO, (3) Batteries 3.0Ah, (1) Charger, (1) Routine ECO shaft with guarded rotary disc T3-C10, (1) Routine ECO shaft with non-guarded Apple Core Burr A2-M8, (1) Pony shaft, (1) Tool Bag, (1) Long case. Also available with a head with non-guarded rotary disc T2-C10 (T-0001).



T-0027G: TERAFLOAT ECO PROFESSIONAL XS SET

(2) Motors ECO, (3) Batteries 3.0Ah, (1) Charger, (1) Routine ECO shaft with guarded rotary disc T3-C10, (1) Routine ECO shaft with non-guarded Apple Core Burr A2-M8, (1) Incisor shaft, (1) Pony shaft, (1) Tool Bag, (1) Long case. Also available with a head with non-guarded rotary disc T2-C10 (T-0027).



T-0063G: TERAFLOAT ECO PROFESSIONAL XL SET

(4) Motors ECO, (6) Batteries 3.0Ah, (1) 4 Bay-charger, (1) Routine ECO shaft with guarded rotary disc T3-C10, (1) Routine ECO shaft with non-guarded Apple Core Burr A2-M8, (1) Incisor shaft, (1) Pony shaft, (1) Incisor Speculum, (1) Tool Bag, (1) Large case. Also available with a head with non-guarded rotary disc T2-C10 (T-0063).



MOST POPULAR

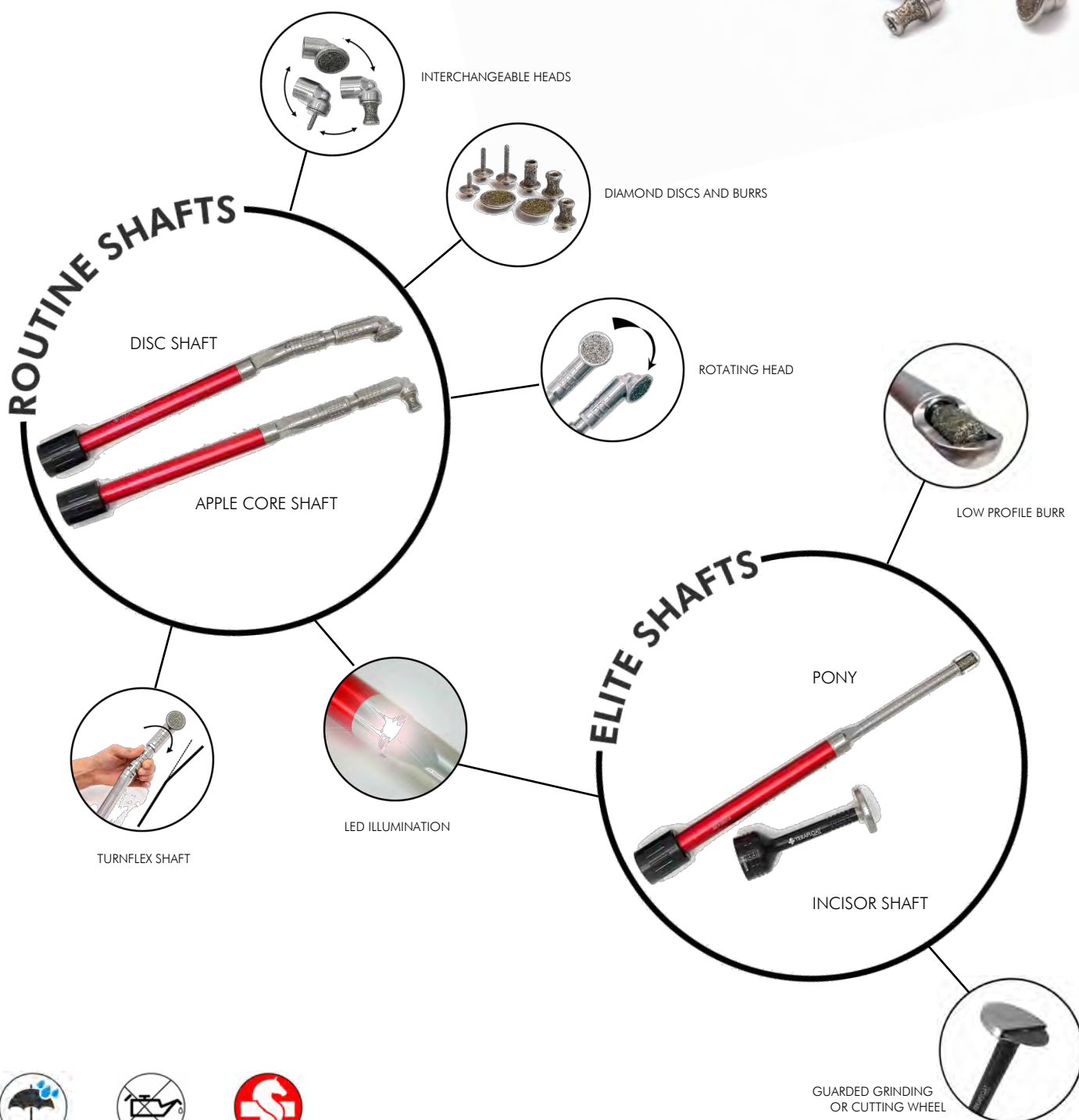
TERAFLOAT® LED

LIGHTWEIGHT PERFECTION

The Terafloat LED line features:

- Variable speed
- Trigger locking switch
- Electronic shut-off protection
- Lithium batteries 3Ah
- Battery charge indicator lights
- Removable shafts
- Wired for LED shaft
- Routine and elite shafts

TERAFLOAT LED STANDARD SET WITH ROUTINE SHAFTS (DISC AND APPLE CORE)



The Terafloat LED line is the perfect power float for equine dentistry. It is lightweight, battery powered, water proof, maintenance free, durable and the built-in LED lights illuminate the oral cavity for perfect examination and treatment.

The two routine shafts have the Turnflex mechanism to quickly switch from a straight or curved position allowing the perfect positioning of the grinding head. The apple core shaft and the disc shaft are identical, but each use a different grinding head. The diamond coated Terafloat burrs and discs are Swiss made and they are interchangeable. The routine shafts are efficient and produce precise dental work.

The two elite shafts, the pony shaft and the incisor shaft, use the same motor and they are easily interchanged. The pony shaft has a low profile guarded burr that reaches tight spaces and the incisor shaft has a large cutting or grinding wheel which allows for efficient and precise incisor work.

The Terafloat LED is an efficient and practical instrument with smart features for the most proficient equine dentistry procedures of the 21st century. Several Terafloat LED sets are available to satisfy all dentistry needs. The modular components are interchangeable, making it easy to upgrade from one set to the next.



T-0004G: TERAFLOAT LED BASIC SET

(1) Motor LED, (2) Batteries 3.0Ah, (1) Charger, (1) Routine LED shaft with guarded rotary disc T3-C10, (1) Tool Bag, (1) Long case. Also available with a head with non-guarded rotary disc T2-C10 T-0004).



T-0007G: TERAFLOAT LED BASIC PLUS SET

(1) Motor LED, (2) Batteries 3.0Ah, (1) Charger, (1) Routine LED shaft with guarded rotary disc T3-C10, (1) Head with non-guarded Apple Core Burr A2-M8, (1) Tool Bag, (1) Long case. Also available with a head with non-guarded rotary disc T2-C10 (T-0007).



T-0014G: TERAFLOAT LED STANDARD SET

Motors LED, (3) Batteries 3.0Ah, (1) Charger, (1) Routine LED shaft with guarded rotary disc T3-C10, (1) Routine LED shaft with non-guarded Apple Core Burr A2-M8, (1) Tool Bag, (1) Long case. Also available with a head with non-guarded rotary disc T2-C10 (T-0014).



T-0050G: TERAFLOAT LED ADVANCED SET (INCISOR)

(2) Motors LED, (3) Batteries 3.0Ah, (1) Charger, (1) Routine LED shaft with guarded rotary disc T3-C10, (1) Routine LED shaft with non-guarded Apple Core Burr A2-M8, (1) Incisor shaft, (1) Tool Bag, (1) Long case. Also available with a head with non-guarded rotary disc T2-C10 (T-0050).



T-0053G: TERAFLOAT LED ADVANCED SET (PONY)

(2) Motors LED, (3) Batteries 3.0Ah, (1) Charger, (1) Routine LED shaft with guarded rotary disc T3-C10, (1) Routine LED shaft with non-guarded Apple Core Burr A2-M8, (1) Pony shaft, (1) Tool Bag, (1) Long case. Also available with a head with non-guarded rotary disc T2-C10 (T-0053).



T-0011G: TERAFLOAT LED PROFESSIONAL XS SET

(2) Motors LED, (3) Batteries 3.0Ah, (1) Charger, (1) Routine LED shaft with guarded rotary disc T3-C10, (1) Routine LED shaft with non-guarded Apple Core Burr A2-M8, (1) Incisor shaft, (1) Pony shaft, (1) Tool Bag, (1) Long case. Also available with a head with non-guarded rotary disc T2-C10 (T-0011).



T-0056G: TERAFLOAT LED PROFESSIONAL XL SET

(4) Motors LED, (6) Batteries 3.0Ah, (1) 4 Bay-charger, (1) Routine LED shaft with guarded rotary disc T3-C10, (1) Routine LED shaft with non-guarded Apple Core Burr A2-M8, (1) Incisor shaft, (1) Pony shaft, (1) Incisor Speculum, (1) Tool Bag, (1) Large case. Also available with a head with non-guarded rotary disc T2-C10 (T-0056).



MOST POPULAR

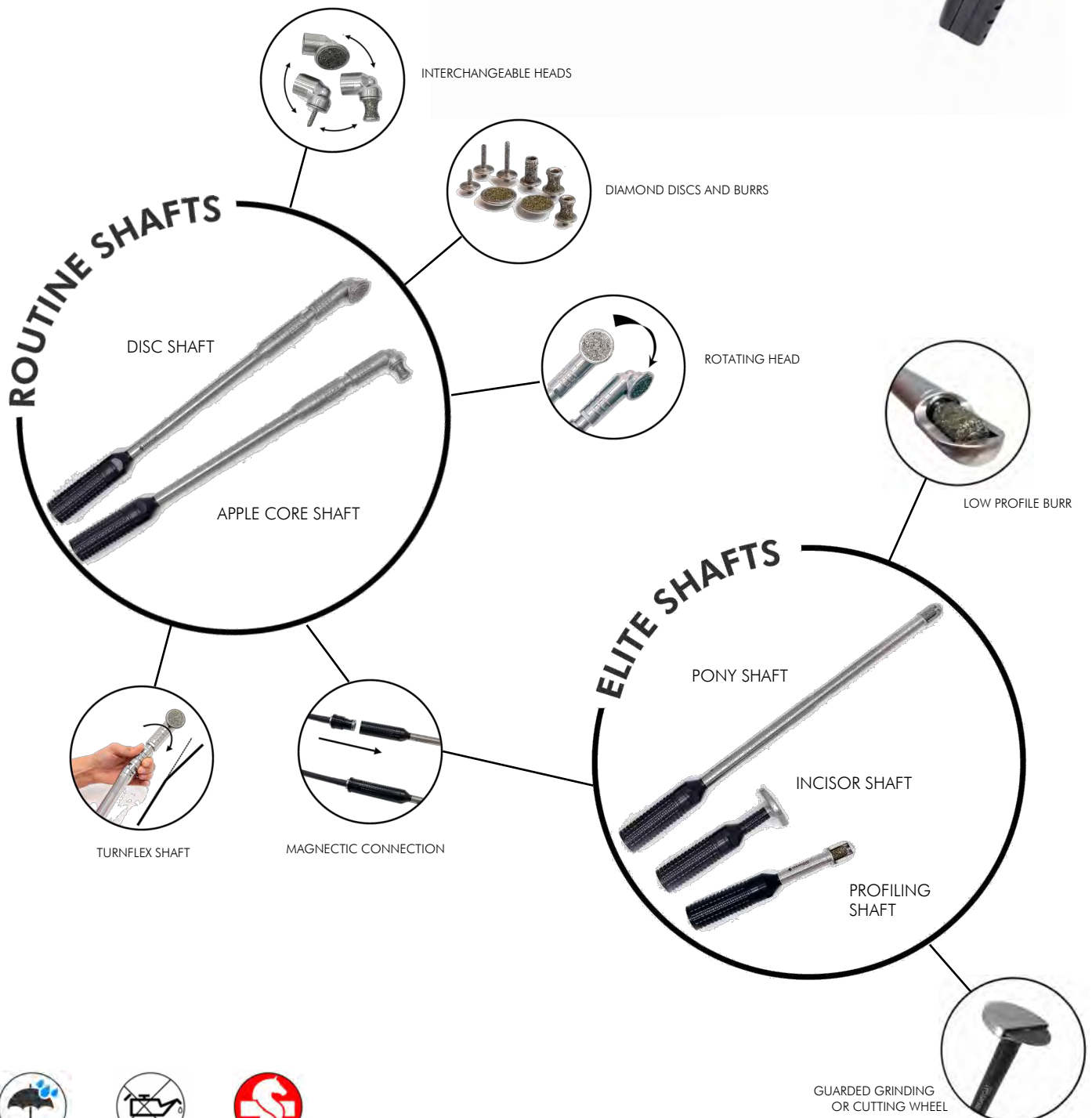
TERAFLOAT® FLX

FLEXIBLE PERFECTION

The Terafloat FLX line features:

- Variable speed trigger with trigger lock
- Electronic shut-off protection
- Lithium batteries 6Ah
- Battery charge indicator lights
- Carrying belt with pivoting motor clip
- Holster for grinding shaft
- Reinforced flexible drive shaft
- Waterproof magnetic quick connection
- Routine shafts and elite shafts

TERAFLOAT FLX WITH
ROUTINE DISC SHAFT

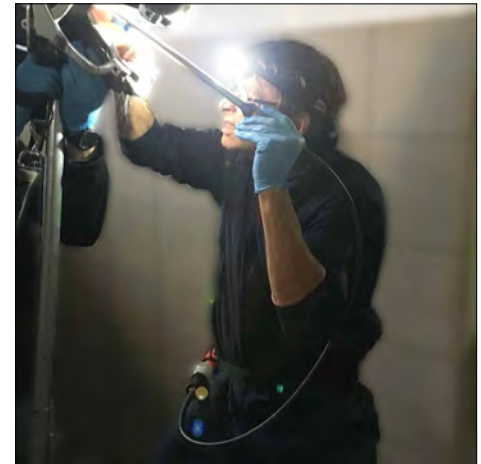


The Terafloat FLX line is perfect for the one handed treatment technique often favored in Europe. The motor pivots on a carrying belt with an instrument holster to hold the grinding shaft if needed. The connection between the reinforced flexible drive shaft and the grinding shafts is magnetic and waterproof.

The two routine shafts have the Turnflex mechanism to quickly switch from a straight or curved position allowing the perfect positioning of the grinding head. The apple core shaft and the disc shaft are identical, but each use a different grinding head. The diamond coated Terafloat burs and discs are Swiss made and they are interchangeable. The routine shafts are efficient and produce precise dental work.

The three elite shafts, the pony, the incisor and the profiling shaft. The pony shaft has a low profile guarded burr that reaches tight spaces and the incisor shaft has a large cutting or grinding wheel which allows for efficient and precise incisor work. The profiling hand piece handles detailed work in the rostral aspect of the oral cavity including incisor work and 'O6 profiling.

Various Terafloat FLX sets are available, and the components are modular and interchangeable, making it easy to upgrade from one set to next level.



T-0077G: TERAFLOAT FLX BASIC SET

(1) Motor Eco, (1) Belt with Holster, (2) Batteries 6.0Ah, (1) Charger, (1) Flexible Drive Shaft, (1) Terafloat FLX Shaft with guarded rotary disc T3-C10, (1) Tool Bag, (1) Long Case. Also available with a head with non-guarded rotary disc T2-C10 (T-0024).



T-0080G: TERAFLOAT FLX BASIC PLUS SET

(1) Motor Eco, (1) Belt with Holster, (2) Batteries 6.0Ah, (1) Charger, (1) Flexible Drive Shaft, (1) Terafloat FLX shaft with guarded rotary disc T3-C10, (1) Head with non-guarded Apple Core Burr A2-M8, (1) Tool Bag, (1) Long Case. Also available with a head with non-guarded rotary disc T2-C10 T-0080)



T-0083G: TERAFLOAT FLX STANDARD SET

(1) Motor Eco, (1) Belt with Handpiece Holster, (2) Batteries 6.0Ah, (1) Charger, (1) Flexible Drive Shaft, (1) Terafloat FLX shaft with guarded Rotary disc T3-C10, (1) Terafloat FLX shaft with non-guarded Apple Core Burr A2-M8, (1) Tool Bag, (1) Long Case. Also available with a head with non-guarded rotary disc T2-C10 (T-0083)



T-0089G: TERAFLOAT FLX ADVANCED SET (INCISOR)

(1) Motor Eco, (1) Belt with shaft Holster, (2) Batteries 6.0Ah, (1) Charger, (1) Flexible Drive Shaft, (1) Terafloat FLX shaft with guarded rotary disc T3-C10, (1) Terafloat FLX shaft with non-guarded Apple Core Burr A2-M8, (1) Terafloat FLX Incisor handpiece, (1) Tool Bag, (1) Long Case. Also available with a head with non-guarded rotary disc T2-C10 (T-0089)



T-0096G: TERAFLOAT FLX ADVANCED SET (PONY)

(1) Motor Eco, (1) Belt with shaft Holster, (2) Batteries 6.0Ah, (1) Charger, (1) Flexible Drive Shaft, (1) Terafloat FLX shaft with guarded rotary disc T3-C10, (1) Terafloat FLX shaft with non-guarded Apple Core Burr A2-M8, (1) Terafloat FLX Pony handpiece, (1) Tool Bag, (1) Long Case. Also available with a head with non-guarded rotary disc T2-C10 (T-0096)



T-0092G: TERAFLOAT FLX PROFESSIONAL XS SET

(1) Motor Eco, (1) Belt with shaft Holster, (2) Batteries 6.0Ah, (1) Charger, (1) Flexible Drive Shaft, (1) Spare Drive Cable with changing keys, (1) Terafloat FLX shaft with guarded rotary disc T3-C10, (1) Terafloat FLX shaft with non-guarded Apple Core Burr A2-M8, (1) Terafloat FLX Incisor handpiece, (1) Terafloat FLX Pony handpiece, (1) Tool Bag, (1) Long Case. Also available with a head with non-guarded rotary disc T2-C10 (T-0092)



T-0109G: TERAFLOAT FLX PROFESSIONAL XL SET

(1) Motor Eco, (1) Belt with shaft Holster, (2) Batteries 6.0Ah, (1) Charger, (1) Flexible Drive Shaft, (1) Spare Drive Cable with changing keys, (1) Terafloat FLX shaft with guarded rotary disc T3-C10, (1) Terafloat FLX shaft with non-guarded Apple Core Burr A2-M8, (1) Terafloat FLX Incisor handpiece, (1) Terafloat FLX Pony handpiece, (1) Terafloat FLX Profiling handpiece, (1) Tool Bag, (1) Long Case. Also available with a head with non-guarded rotary disc T2-C10 (T-0109)



TERAFLOAT COMPONENTS

Rotary Disc T2-C10 (T-0202) Coarse diamond coated grinding disc for non-guarded head (T-0180)



Rotary Disc T3-C10 (T-0206) Coarse diamond coated grinding disc for guarded head (T-0181)



Apple Core Burr A2-M8 (T-0212) Diamond coated apple core grinding burr for non-guarded head



Apple Core Burr Canine A4-M8 (T-0217) Diamond coated apple core grinding burr for non-guarded head with additional inside coating for canine work



Cylindrical Burr Large Z1-M8 (T-0217) Diamond coated large cylindrical grinding burr for non-guarded head.



Diamond coated diastema burrs: for non-guarded head only.

Conical Short D1-F4 (T-0261) Full coating.
Cylindrical Long D2-F4 (T-0262) Full coating.
Cyl. Extra Long D3-F4 (T-0263) Tip not coated.



Incisor Wheel S1-F4 (T-0285) Diamond coated grinding wheel for incisor shaft.



Pony Shaft Burr P1-C8 (T-0283) Diamond coated grinding burr for pony shaft or profiling shaft (FLX).



Terafloat ECO (or LED) Incisor Shaft (T-0159) Terafloat incisor shaft with guarded diamond wheel for incisor work, works with LED and ECO motor



Terafloat ECO Pony Shaft (T-0156) Terafloat shaft, straight, slimline, with guarded diamond burr for caudal teeth, works with ECO motor



Terafloat LED Pony Shaft (T-0157) LED pony shaft with built in LED lights, straight, slimline, with guarded diamond burr for caudal teeth, works with LED motor



Terafloat FLX Incisor Shaft (T-0144) FLX incisor shaft with large diamond coated incisor wheel



Terafloat FLX Pony Shaft (T-0143) FLX pony shaft, straight, slimline, with guarded diamond burr for caudal teeth



Terafloat FLX Profiling Shaft (T-0146) FLX short profiling shaft with diamond coated burr, with or without protection



Terafloat FLX drive shaft cable (T-0173) Replacement cable 6mm for FLX flexible drive shaft



Clinic Charger (T-0128) Milwaukee 4-bay charger (used in professional sets)



USER INSTRUCTIONS

IMPORTANT

Always use sufficient sedation and a good quality full mouth speculum for treatment. Perform the procedures only if you have adequate training and experience with equine dentistry. Remove dental material conservatively - avoid that horses receive excessive treatment. If you have any questions or concerns please do not hesitate to contact Swissvet for assistance.

These instructions are valid for all three product lines of the Terafloat, ECO, LED and FLX.



Incisors (1) and Canines (also see 9): This procedure is best done at the beginning of the dental work when sedation is the strongest, with the Swissvet incisor speculum. Use the grinding disc for work on incisors (1) and additionally the apple core burr for smoothing the canines. Advanced users may consider the Terafloat Incisor float (9).

Points on lower (2) and upper arcade (3): Use the apple core burr and place it at a 45 degree angle on the lingual (2, lower arcade) or vestibular (3, upper arcade) side of the cheek teeth where points need to be smoothed and move caudally. Closing the speculum by one click on the treatment side can increase the space between cheek and teeth. Remove sharp points conservatively.

Hooks on lower (4) and upper arcade (5): Hooks can be reduced with grinding discs, the apple core burrs, or large cylindrical burrs, depending on the pathology as well as the space between upper and lower arcade.

When floating caudal hooks you may flex the shaft toward the lingual side to push the tongue away and hold the float straight to work your way from the lingual side onto the hooks (4). You may use your hand to guide the grinding head for rostral hooks (1/206). Flexing the shaft down helps avoiding the incisor plates of the speculum (5).

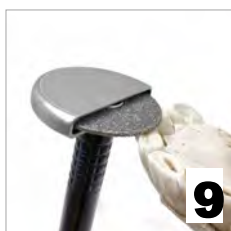
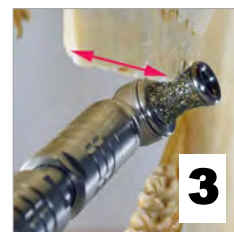
Waves and steps: Use the grinding disc (see 4) or, if space is very limited, the large cylindrical burr (6) to reduce waves or steps. Do not accidentally open a pulp cavity and do not take more than two cheek teeth out of occlusion one either side to avoid excessive stress on the remaining teeth in occlusion.

Bit seat (7): Use the apple core burr to place a bit seat and consider guiding the instrument with your second hand for better control of the procedure. Make sure not to open the pulp with this procedure.

Diastema (8): Use the long mandibular (D2), long maxillary (D3) or short (D1) diastema burr to enlarge an interdental space - with precaution. Make sure you understand the risk of this procedure and perform it only if other treatments have failed.

Incisor work (9) using the incisor shaft: Attention: this hand piece grinds very aggressively; make sure you don't over correct or open a pulp. Heat production is typically not a concern but check manually for heat. Use this hand piece to grind (9) or to cut the incisor to the desired length or shape. It is best to block the trigger lock and hold the motor/shaft with one hand and the mandible or maxilla with the other. Alternatively, incisor work can be done using the disk shaft.

Working with small breeds or in tight spaces (10) using the pony shaft: The pony shaft offers the perfect solution if the anatomy doesn't allow enough room for routine shafts. The pony shaft is available for the ECO, FLX and the LED line. It has a small profile diamond burr to grind the tooth into the desired shape or to shorten it enough to apply the disc shaft or the apple core shaft to finish the job.



DENTISTRY ACCESSORIES

Swissvet Standard Speculum (S-0012) McPherson style speculum, 5 adjustment levels, stainless steel (magnetic) with Biothane straps, standard AND half-circle plates



Swissvet Optimum Speculum (S-0015) Millennium style speculum, 22 adjustment levels, stainless steel (magnetic) with Biothane straps, standard AND half-circle plates



Standard Plates (S-0050) Stainless steel (magnetic) standard plates for full-mouth speculum



Half Circle Plates (S-0054) Stainless steel (magnetic) half-circle plates for full-mouth speculum



Straight Plates (S-0058) Straight speculum plates for incisor work (stainless steel with plastic protection)



Endodontic Plates (S-0060) Stainless steel (magnetic) standard plates for full-mouth speculum with gap for endodontic treatment (pair)



TARO speculum (S-0016) Aluminum full-mouth speculum with rapid-close knobs, adjustable incisor plates, and Biothane straps (made in Germany)



Swissvet Mighty Speculum (S-0023) Standard-sized stainless steel speculum, 10 adjustment levels, with Biothane straps and half-circle plates (made in USA)



Swissvet Silverslide Speculum (S-0024)

Heavy-duty stainless steel speculum, infinitely adjustable, with Biothane straps and half-circle plates (made in USA)



Modified Gunther Speculum (S-0022) Modified Gunther speculum with moveable bite plates for MITSE technique; stainless steel with Biothane strap



Pony Mighty Speculum (S-0019) Pony-sized stainless steel speculum, Mighty style, with Biothane straps and half-circle plates (made in Pakistan)



Swissvet Incisor Speculum (S-0026) Incisor speculum with adjustable elastic strap



Swissvet Dental Head Ring (S-0034) Head support ring with pivoting base, rope with cleat



Spreader Bar (S-0030) Stainless steel spreader bar for full-mouth speculums (fits McPherson or Millennium type speculums)



Cheek Retractor (S-0031) Stainless steel cheek retractor for full-mouth speculums



Swissvet Twitch (S-0115) L-shaped stainless steel twitch with 6mm rope, single person model with brass bolt snap



DENTISTRY ACCESSORIES

Headstand Standard (S-0035) Hoofjack head stand, standard model with a red base



Headstand Articulated (S-0036) Hoofjack head stand with advanced articulated cradle and a red base



Instrument Rack (S-0037) Instrument rack for Hoofjack head stand



Flush Syringe 400mL (S-0110) Flush syringe 400 mL, two-handed model, with spare seal



Flush Syringe 300mL (S-0111) Flush syringe with pistol grip 300 mL, one-handed model, with spare seal



Dental Mirror 50mm (S-0040) Dental mirror 50mm, stainless with T-handle. Replacement mirror available upon request (S-0041)



Illuminated Dental Mirror 48mm (S-0042) Illuminated dental mirror 48mm with LED light, one AA battery, and protective pouch (made in Germany). Replacement mirror available upon request (S-0044)



Examination Set (S-0400) Examination and exploration set with 2 handles, straight (S-0403) and T-bar (S-0402), 12 screw on tips (S-0401), and pouch



Periodontometer Set (S-0250) Erbrich periodontometer set with stainless steel handle and 2 periodontometer screw on tips, long (90deg) and short (60deg), made in Germany.



Periodontometer tip LONG (S-0252) Stainless steel replacement tip long 90 deg.



Periodontometer tip SHORT (S-0253) Stainless steel replacement tip short 60 deg.



Tarter Removal Scaler (S-0405) Scaler with flat and pointy tip, for canine tooth tartar removal.



Wolf Tooth Set Small (S-0201) Wolf tooth extraction set with 3 elevators, 2 forceps, and pouch



Wolf Tooth Set Large (S-0202) Wolf tooth extraction set with 5 elevators, 3 forceps, one scaler, and stainless steel instrument box



Wolf Tooth Elevators Long Pair (S-0204) Set of 2 stainless steel elevators 30 cm length



Wolf Tooth Forceps Angled 11" (S-0255) Stainless steel 11" wolf tooth forceps, angled.



Wolf Tooth Forceps Straight 11" (S-0256) Stainless steel 11" wolf tooth forceps, straight.



DENTISTRY ACCESSORIES

S-Float (S-0101) S-shaped hand float with carbide chips (made in Germany)



Hippodent Handle Short (S-0240) or Long (S-0241) Short hippodent hand float handle 10" with pistol grip OR long hippodent hand float handle 16" with pistol grip: without blade (made in Germany)



Hippodent Blade Straight (S-0242) Straight blade with carbide chips, fits short or long hippodent handle (made in Germany)



Hippodent Blade Curved Up (S-0243) Curved up blade with carbide chips, for caudal work, fits short or long hippodent handle (made in Germany)



Hippodent Blade Curved Down (S-0244) Curved down blade with carbide chips, for bit seat, fits short or long hippodent handle (made in Germany)



Incisor Extraction Set Swissvet (S-0301) Incisor forceps 11" (S-0302), mallet (S-0305), fine elevator (S-0306), flat elevator (S-0308), and root elevator set (S-0420)



Swissvet Mallet (S-0305)

Stainless Steel Mallet, 750g



Root Elevator Set (S-0420) Set of 4 stainless steel elevators with large brown handle



Elevator Flat (S-0308) Stainless steel flat curved blade elevator for gingiva separation



Elevator Fine (S-0306) Stainless steel elevator with fine tip for fragment removal



Incisor Forceps 11" (S-0302) Stainless steel forceps with 11" handle



Gingiva Elevator Set (S-0418) Set of 2 stainless steel T-bar handle elevators for gingiva or fragments



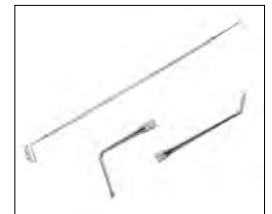
Octagonal Elevator Set (S-0419) Gingiva and molar fragment elevator set with 2 T-bar handles and 10 inserts (5 flat and 5 convex), stainless steel



Gouges Set (S-0416) Erbrich strong gouges set of 5 (6, 8, 10, 12, 14mm) (made in Germany)



Scaler Filling Instrument (S-0417) Erbrich filling instrument for diastema treatment, with scaler end and 30mm long ball point 2.8mm, made in Germany.



Reynolds Caps removal forceps set (S-0220) Set of 2 forceps for deciduous cheek tooth removal, stainless steel.



DENTISTRY ACCESSORIES

Molar Extraction Set (S-0225) Stainless steel extraction forceps set with (1) 3-prong left, (1) 3-prong right, (1) 4-prong, (1) molar spreader, and transport pouch



Molar Extraction Forceps 3P Left (S-0226) Stainless steel 3-prong (one left) forceps with 19" round handle



Molar Extraction Forceps 3P Right (S-0227) Stainless steel 3-prong (one right) forceps with 19" round handle



Molar Extraction Forceps 4P (S-0228) Stainless steel 4-prong forceps with 19" round handle



Molar Extraction Forceps 4P Flat (S-0237) Stainless steel 4-prong forceps with 19" flat handle



Molar Extraction Forceps 4P Pony (S-0233) Stainless steel pony sized 4-prong forceps with 19" round handle



Molar Forceps Universal Long (S-0229) Stainless steel forceps with flat serrated jaw and 19" round handle



Molar Forceps Universal Short (S-0230) Stainless steel forceps with flat serrated jaw and 16" flat handle



Molar Extraction Forceps Concave (S-0323) Universal molar forceps, concave jaws, round handle



Reverse Molar Extraction Forceps Lower (S-0239) Stainless steel straight reverse molar extraction forceps for mandibular 06 with 19" round handle



Reverse Molar Extraction Forceps Upper (S-0239) Stainless steel curved reverse molar extraction forceps for maxillary 06 with 19" round handle



Fulcrum With Aluminum Blocks (S-0236) Fulcrum with two stainless steel handles and 7 aluminum blocks



Molar Fragment Forceps Set (S-0320) Molar fragment extraction set with 3 stainless steel fragment forceps (20, 40, and 60mm)



Molar Fragment Forceps Universal (S-0321) Universal stainless steel 4cm molar fragment forceps with 19" round handle

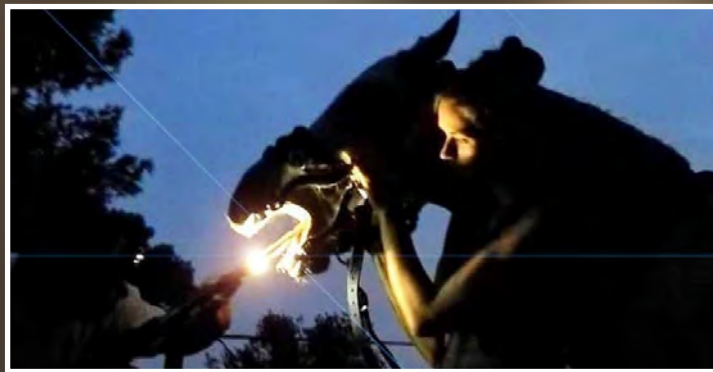
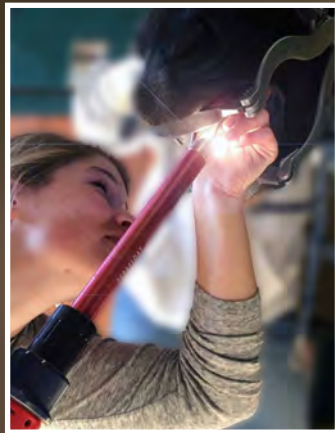


Molar Spreader Long 3mm (S-0231) Stainless steel standard spreader with 3mm blades and 19" round handle



Molar Spreader Long 6mm (S-0238) Stainless steel standard spreader with 6mm blades and 19" round handle





LIGHTWEIGHT PERFECTION